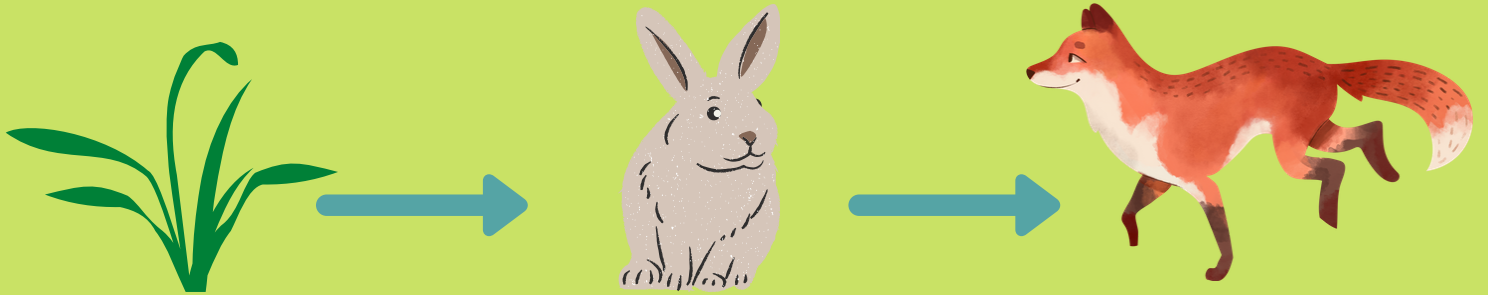


Food Chains

The transfer of energy between plants and animals is called a food chain.



A food chain always starts with a **producer**.

Producers are able to make their own energy, like green plants, through a process called **photosynthesis**.

The living things that eat plants and other animals are called **consumers**.

A **predator** is an animal that eats other animals.

The animals that predators eat are called **prey**.

Predators are found at the top of the food chain.

