

# Habitats

A habitat is where plants and animals live.

Habitats provide food, water and shelter.

There are lots of different habitats  
found all over the world.

Different habitats are home to different animals.  
All the animals found in one habitat are adapted  
to live there and keep it healthy and balanced.



Unfortunately, humans are responsible for  
destroying many habitats around the world.

Forests are being burned down, rivers are being  
polluted, polar ice caps are melting and the oceans  
are being overfished.

Without our help, these habitats and the plants  
and animals that call them home will go extinct



# Adaptations

Some habitats are **EXTREME** and require special adaptations for the plants and animals to survive



Snowy Owls have their white plumage to camouflage them against the snowy tundra.

Burrowing Owls live in the hot desert, so spend a lot of the daytime hiding underground where it's cooler.



Eurasian Eagle Owls have long, broad wings which help it fly using minimal energy

Boobook Owls have found it's easier to find food in urban areas compared to their native scrub.

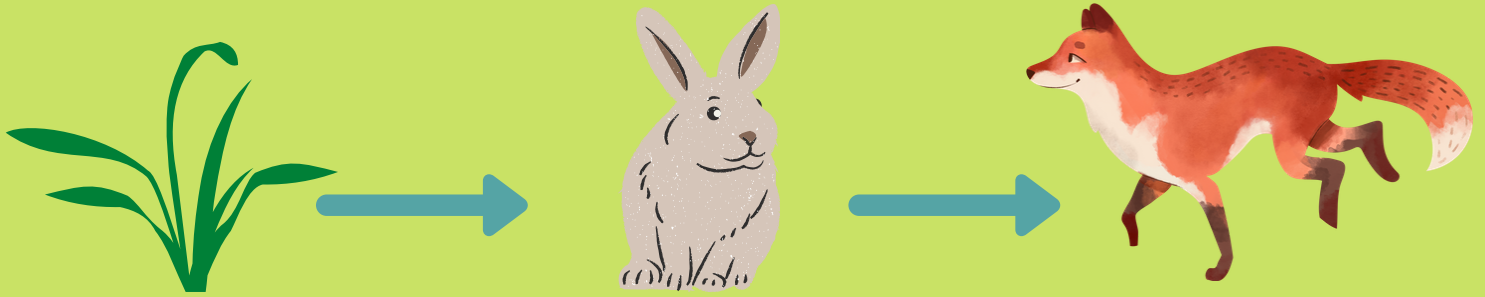


Barn Owls have a large flattened facial disc which channels sound into their ears so they can hunt more efficiently.



# Food Chains

The transfer of energy between plants and animals is called a food chain.



A food chain always starts with a **producer**.

Producers are able to make their own energy, like green plants, through a process called **photosynthesis**.

The living things that eat plants and other animals are called **consumers**.

A **predator** is an animal that eats other animals.

The animals that predators eat are called **prey**.

Predators are found at the top of the food chain.

